

MAGNETIC PAD (TRAY/BAR)



Bar type
No.AYTP-B01R



Tray type
No.AYTP-T01CR

Powerful Neodymium Magnets! Securely Holds Heavy Tools in Place.

Two types of magnetic pads that can be attached to the sides of cabinets or tool wagons. Equipped with powerful neodymium magnets (N40), they securely hold even heavy tools. Perfect for organizing long tools, spray cans, or other items that require extra storage space, as well as temporarily placing tools during work.



No.AYTP-T01GR

No.AYTP-B01BL

High adsorption power. Featuring Neodymium Magnets (N40).



Neodymium Magnets (N40) deliver powerful magnetic force, securely holding heavy tools like hammers in place.

Freely customize tool combinations and placement anywhere you like!



Save storage space by attaching spray cans to walls or other surfaces. By combining multiple magnetic pads, even heavy and long tools can be secured to cabinets.
*Note: Stability may vary depending on the weight and shape of the items.

Fold up the four corners to prevent items from spilling out. (Tray type only)



The tray type can be used as a tray by folding up the edges at the four corners, preventing the scattering and loss of non-magnetic parts.

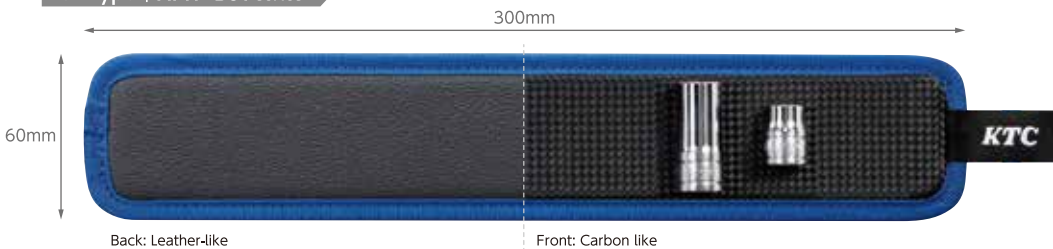
Wide magnetic coverage with a compact size

By strategically placing multiple neodymium magnets in optimal positions, we've achieved both strong holding power and an extensive magnetic reach, all in a compact design.

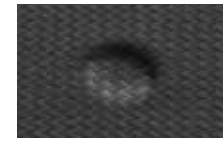
Tray Type | AYTP-T01 series



Bar Type | AYTP-B01 series



Large number of magnets and wide attraction range



By using 20 powerful magnets in the tray and 8 in the bar, strong adhesive power can be used over a wide area.

Reversible design that can be used on both sides

The front side has a carbon-like finish, while the back side has a leather-like finish. The flexible material is less likely to scratch objects. (Applies to both the tray and the bar)



MAGNETIC PAD (TRAY/BAR)

No.	Type	L	W	Border Color	Weight(g)	⊞
AYTP-T01R	Tray	340	240	Red	610	30
AYTP-T01BL				Blue		30
AYTP-T01GR				Green		30
AYTP-T01CR				Orange		30
AYTP-B01R	bar	300	60	Red	178	100
AYTP-B01BL				Blue		100
AYTP-B01GR				Green		100
AYTP-B01CR				Orange		100

- Magnetic pad using powerful neodymium magnets. [Magnets/tray type: 20 pieces, bar type: 8 pieces]
- It can be attached and used in places with little height and width, such as cabinets and carts.
- Ideal for organizing items that require space, such as long tools and spray cans.
- The AYTP-T01 series can also be used as a tray by raising the four corners.
- Reversible design with a carbon-look front and leather-look back.
- Flexible and with good cushioning, it is less likely to damage objects.

CAUTION Do not use in places subject to magnetic influence.

KTC KYOTO TOOL CO., LTD.

128 Sayama-Shinkaichi, Kumiyama Kuse-gun, Kyoto 613-0034, Japan
Official site: en.ktc.jp

- All sizes on this leaflet are indicated as millimeter unless mentioned.
- There might be size differences between those mentioned on this leaflet and the actual products for the product tolerance.
- Product design might be changed for the improvement without the notifications.

