

# DIGITAL CALIPER (WIRELESS MODEL)



**Digital caliper (wireless model) that requires no transmitter /receiver or dedicated application is now available!**  
**Transmit measurements at the touch of a button.**

Digital caliper with a built-in transmitter that allows measurements to be sent and input to your device via Bluetooth®.

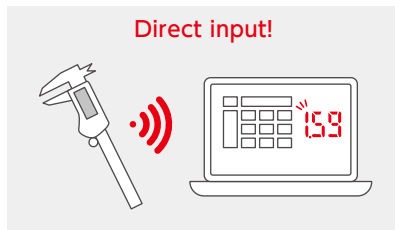
Prevent transcription errors by transmitting the measurements at the touch of a button. No dedicated application is required, and the data can be smoothly input into your current work report, thereby improving work quality and accuracy through automatic recording.



Sent the measurements to your device

**Improve work efficiency & quality**

Measurements can be transmitted and input to a PC or tablet via Bluetooth®.

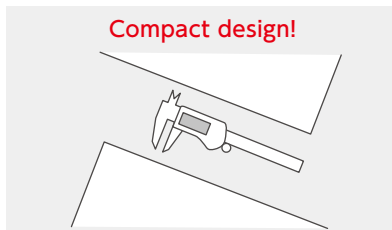


- ☑ Prevent scale misreading and transcription errors.
- ☑ Reduce the processes of handwriting and entering the data.

No transmitter or receiver required

**Comfortable work & save the cost**

With a built-in transmitter, the digital calipers are compact and easy to use.



- ☑ Accurate and smooth measurement in tight spaces.
- ☑ Save the installation cost without buying a transmitter and receiver.

No dedicated apps required.

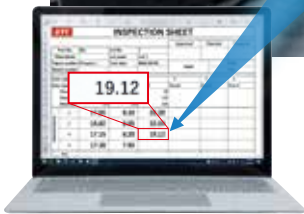
**Comfortable operation & save the cost**

Measurements can be entered into Excel or other software without a specific app.



- ☑ Your device and OS can be used without modification.  
\*ONLY Bluetooth® compatible devices.
- ☑ No need to install apps on the device. No need to change work procedures.

# "Measure" and "record" at the touch of a button! Accurately save the evidence of your work and improve work efficiency and quality!



Simply connect to the device via Bluetooth® and press the data transmission button to automatically input the measured values. After inputting the data, the key\* automatically moves to the next, and allowing measurement to continue without stopping work.

\*The key input settings for transmitted data can be changed in the TRASAS Settings application.



No transmitter and receiver are required, allowing connection to any receiving terminal. No need to manage a separate transmitter and receiver.



Equipped with thumb roller for fine feeding of jaws. This makes it easy to adjust the fine force and enables accurate measurement.

## Easy to change caliper's settings



Install TRASAS Settings on your smartphone or tablet, and change the "device name", "transmit data method settings", and "pairing mode settings".



Download "TRASAS Settings".  
\*Japan domestic only

\*Simultaneous release with digital calipers (wireless model)



No. GNN30

No. GNN20

No. GNN15

With a dedicated case

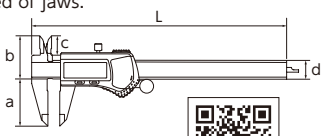


Products' details  
\*Japanese version only

## DIGITAL CALIPER (WIRELESS MODEL)

No.	Measuring range	L	a	b	c	d	Weight (g)	☐
GNN15	0~150	236	40	37	16.5	16	170	1
GNN20	0~200	286	50	40	19.5	16	195	1
GNN30	0~300	400	60	42	21.5	16	270	1

- Max. instrumental tolerance / ±0.03mm (GNN15/20), ±0.04mm (GNN30)
- Minimum display value / 0.01mm
- Power source: Coin-type lithium battery (CR2032)
- Communication method/Bluetooth® 5.3
- Accessories: Inspection certificate, battery for operation check.
- Digital calipers with a built-in transmitter that allows measurements to be transmitted to and input from devices via Bluetooth®, and no need for receivers.
- No dedicated application is required to input measurements regardless of the receiving devices. Caliper settings can be changed using the settings app "TRASAS Settings."
- Equipped with thumb roller for fine feed of jaws.
- Digital display with excellent visibility.
- \*The Bluetooth® word mark and logo are registered trademarks of Bluetooth SIG, Inc.



•Battery life varies depending on usage conditions and other factors.  
•Do not use the gauge beyond its measuring range.



About calibration Certificate  
\*Japanese version only

## KTC's IoT tools with numerical visualization and data output functions



Data recording, management, and analysis for total safety of every operation



Information on "TRASAS"  
\*Japanese version only

Easy and accurate torque measurement by simply attaching to the tool

### TORQULE



Increased efficiency of automobile inspection and maintenance work

### TIRE DEPTH GAUGE



### BRAKE PAD GAUGE



\*Recording and management of measurements require a smartphone or tablet and download of a free dedicated application (TRASAS Admin).

## KTC KYOTO TOOL CO., LTD.

128 Sayama-Shinkaichi, Kumiyama-cho Kuse-gun, Kyoto 613-0034, Japan  
Official site: en.ktc.jp

- All sizes on this leaflet are indicated as millimeter unless mentioned.
- There might be size differences between those mentioned on this leaflet and the actual products but they are under our specification.
- Product design might be changed for the improvement without the notifications.

