

Beauty of function. Beyond the utility.

3/8"sq. ratchet handle "NBR390A" series

nepros

World's finest tool, "nepros" with no compromises.
Designed for superior levels of durability, weight balance and usability.



en.ktc.jp/our_brand/nepros.html

KTC KYOTO TOOL CO., LTD.

128 Sayama-Shinkaichi, Kumiyama Kuse-gun, Kyoto 613-0034, Japan
Official site : en.ktc.jp

The KTC **KTC** logo, nepros **nepros** logo, and TRASAS **TRASAS** logo are registered trademarks of KYOTO TOOL CO., LTD.
There might be size differences between those mentioned on this leaflet and the actual products for the product tolerance.
Product design might be changed for the improvement without the notifications.



"nepros" is the world's finest tools
stimulating professional senses with durability, usability and beauty.

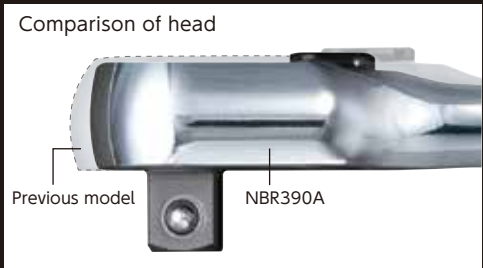


nepros | "nepros" was born to be the world's finest tools in 1995 with 5 years development period. "nepros" deepen itself with concept "more durable, useful, and beautiful" for the professionals.



Lightweight and highly durable compact head.
The 3/8"sq. ratchet handle, NBR 390A series, was created to seek the usability.

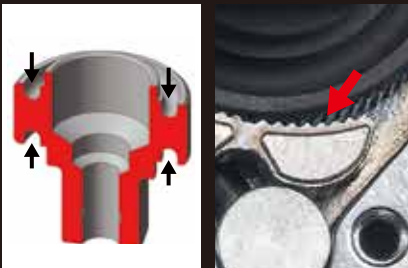
Design for more accessible to narrow space



Shaped up ratchet head.

Width of ratchet head shaped up to 4mm smaller.
Streamline shape from ratchet head to handle gives hand fitting comfortable and usability to reduce work load of professionals.

Compact and light with 90 gears



90 gear made compact and light

8 steps claw

The gear weight becomes 40% lighter than previous model for design review by getting rid of unnecessary parts.
Change from 7 steps to 8 steps claw dispersing forces to be compact and raise the strength. To be compact and for the strength, changer is conjunct with the lever.

Best weight balance with hollowed handle



Additional hollowing

Additional hollowing on the handle designed by our unique technology. Achieved both best weight balance and lightness.

6 functional beauties for pursuing the usability

NBR390A 3/8"sq. series are shaped with ideal function,
world's finest aesthetic and functional beauty.
Provide 6 functional beauties for pursuing the usability
in any situation and places.

Standard model,
easy to use in any situation

NBR390A



Functional beauties of 90 gears and 8 steps claw.

9.5sq.

90

Repair

Spare part

Repairable

No.	Feed angle	B	φ	T	L	Weight (g)	MSRP
NBR390A	4°	26	20	14	180	245	¥ 12,600

- Raised usability by optimized head compacting, lightning, and weight balancing.
- 8 steps claw achieves high strength and durability.
- Repair kit (NBR390A-K) is available.



CAUTION •Switching lever must be set completely to avoid breakage.

9.5sq.

90

Repair

REPAIR KIT FOR 3/8"sq. 90-TOOTH RATCHET HANDLE

No.	Drive size	Contents	Weight (g)	MSRP
NBR390A-K	3/8"sq.	Drive gear, claw, pin×2, Spring×2, Lever, cover, flat head screw×2	40	¥ 4,690

•Application : NBR390A, NBR390AL, NBR390AS, NBR390AF, NBR390AFL, NBR390AH



Firmly receive high torque
with a precision 8 claw
with deepened strength

NBR390AL



Comfortable work without tiredness
by the compact head and best wight balance

9.5sq.

90

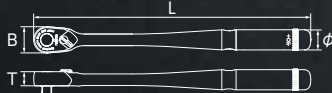
Repair

Spare part

Repairable

No.	Feed angle	B	φ	T	L	Weight (g)	MSRP
NBR390AL	4°	26	20	14	275	380	¥ 16,000

- Raised usability by optimized head compacting, lightning, and weight balancing.
- 8 steps claw achieves high strength and durability.
- Repair kit (NBR390A-K) is available.



CAUTION •Switching lever must be set completely to avoid breakage.
•Be careful of over-torque for the overall length is long, and it is easy to get an excessive load.

The ultimate compact shape fits
in your hand

NBR390AS



Access to narrow spaces by using
with extension bar.

9.5sq.

90

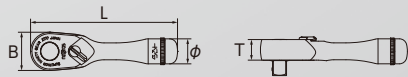
Repair

Spare part

Repairable

No.	Feed angle	B	φ	T	L	Weight (g)	MSRP
NBR390AS	4°	26	17	14	100	160	¥ 12,600

- Raised usability by optimized head compacting, lightning, and weight balancing.
- 8 steps claw achieves high strength and durability.
- Repair kit (NBR390A-K) is available.



CAUTION •Switching lever must be set completely to avoid breakage.
•Be careful of over-torque for the overall length is long, and it is easy to get an excessive load.



NBR390AFL

Improve work efficiency in deep area
with long handle and flex head

3/8"sq. RATCHET HANDLE (FLEX HEAD LONG)

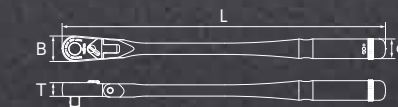


No.	Feed angle	B	φ	T	L	Weight (g)	MSRP
NBR390AFL	4°	26	20	14	330	425	¥ 24,800

- Raised usability by optimized head compacting, lightning, and weight balancing.
- 8 steps claw achieves high strength and durability.
- Repair kit (NBR390A-K) is available.



Available for various places with 180° flex head.



- Work becomes unstable if too much force is applied to the flex part.
- Switching lever must be set completely to avoid breakage
- Be careful of over-torque because the overall length is long, and it is easy to apply an excessive load.

Dramatically improves access to narrow spaces
with flex head

3/8"sq. RATCHET HANDLE (FLEX HEAD)



No.	Feed angle	B	φ	T	L	Weight (g)	MSRP
NBR390AF	4°	26	20	14	225	320	¥ 22,800

- Raised usability by optimized head compacting, lightning, and weight balancing.
- 8 steps claw achieves high strength and durability.
- Repair kit (NBR390A-K) is available.



A beautiful shape that does not make you feel the joint between the head and the handle. Smooth access even in narrow spaces.



- Work becomes unstable if too much force is applied to the flex part.
- Switching lever must be set completely to avoid breakage.

NBR390AF

Refined shape
with extensibility and beauty

3/8"sq. RATCHET HANDLE (STUBBY)



No.	Feed angle	B	T	L	Weight (g)	MSRP
NBR390AH	4°	26	14	74.5	135	¥ 12,600

- Raised usability by optimized head compacting, lightning, and weight balancing.
- 8 steps claw achieves high strength and durability.
- Repair kit (NBR390A-K) is available.



Available in narrow spaces and the places needed to avoid obstacles by using with a spinner handle, etc.



Distance between drives : 50mm



- Switching lever must be set completely to avoid breakage
- Be careful of over-torque because the overall length is long, and it is easy to apply an excessive load when using in combination with a spinner handle, etc.

NBR390AH