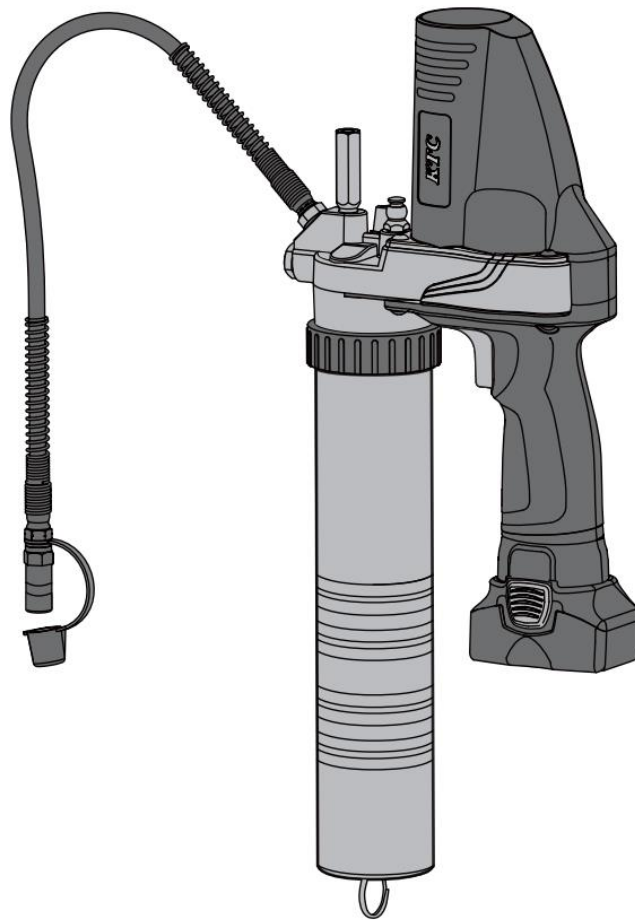




Instruction Manual

CORDLESS GREASE GUN

JTAE911



Operational Precautions - General Safety Instructions



WARNING

1. Consider work area environment. Do not expose tools to rain. Do not use tools in damp or wet locations : Keep work area clean and well lit. Do not use tools in the present of flammable liquids or gases.
2. Guard against electric shock. Avoid body contact with earthed or grounded surfaces.
3. Keep children away. Do not let visitors touch the tools or extension cord. All visitors should be kept away from work area.
4. Store idle tools. When not in use, tool should be stored in a dry locked up place, out of reach of children.
5. Do not force the tool. It will do the job better and safer at the rate for which it was intended.
6. Stay alert. Watch out what you are doing : Use common sense. Do not

operate tool when you are tired. Check damaged parts. Before further use of the tool, a guard or other part is damaged should be carefully checked to determine that it will operate properly and perform its intended function.

7. Check for alignment of moving parts, blinding of moving parts, breakage of parts, mounting and any other condition that may affect its operation.
8. A guard or other parts that is damaged should be properly repaired or replaced by an authorized service center unless otherwise indicated in this instruction manual. Have defective switches replaced by an authorized service center. Do not use tool if switch does not turn it on.
9. To ensure the designed operational integrity of power tools, do not remove installed cover or screws.
10. Use your tool at lower input than specified on the nameplate, otherwise, the finish may be spoiled and working efficiency reduced by motor overload.
11. Do not wipe plastic parts with solvent. Solvents such as gasoline, thinner, benzene, carbon tetrachloride, alcohol, ammonia and oil containing chloric annex may damage and crack plastic parts. Do not wipe them with such solvent. Wipe plastic parts with a soft cloth lightly dampened with soap water.
12. Dress properly. Do not wear loose clothing or jewelry. Contain long hair keep your hair, clothing, and gloves away from moving parts.
13. Use safety equipment. Always wear eye protection, non-skid safety shoes, hard hat, or hearing protection.
14. Do not overreach. Proper footing and balance enables better control of the tool in unexpected situations.

Product Safety Instructions



WARNING

1. Disconnect battery pack from tool or place the main switch in the locked or off position before making any adjustments, changing accessories, or storing the tool. Such preventative safety measures reduce the risk of starting the tool accidentally.
2. Remove adjusting keys or wenches before turning the tool on. A wrench or a key that is left attached to a rotating part of the tool may result in personal injury.
3. Use clamps or other practical way to secure and support the work piece to a stable platform. Holding the work by hand or against your body is unstable and may lead to a loss of control.
4. Maintain tools with care. Keep cutting tools sharp and clean. Properly maintained tools, with sharp cutting edges are less likely to bind and are easier to control.
5. Use only accessories that are recommended by the manufacturer for your model. Accessories that may be suitable for one tool may create a risk of injury when used on another tool.

Important Safety Instructions for Charger & Battery Pack



WARNING

1. Caution : To reduce risk of injury, charge only specific type rechargeable battery packs. Other types of battery packs may burst causing personal injury and damage.
2. Before using charger, read all instructions and cautionary markings on battery packs and chargers.
3. Do not expose charger to rain or snow.

4. To reduce the risk of damage to electric plug and cord, pull by plug rather than cord when disconnecting charger.
5. Use of an attachment not recommended or sold by the charger manufacture may result in a risk of fire, electric shock, or injury to persons.
6. Make sure cord is located so that it will not be stepped on, tripped on, tripped over, or otherwise subjected damage or stress.
7. Do not operate charger with damaged cord or plug. Replace them immediately.
8. Do not operate charger if it has received a sharp blow, been dropped, or otherwise damaged in any way, take it to qualified center.
9. To reduce risk of electric shock, unplug charger from outlet before attempting any maintenance or cleaning. Turning off controls will not reduce this risk.
10. Do not disassemble charger or battery pack; take it to a qualified service center while repair is required. Incorrect reassembling may result in a risk of electric shock or fire.

Additional Safety Rules for Charger & Battery Pack

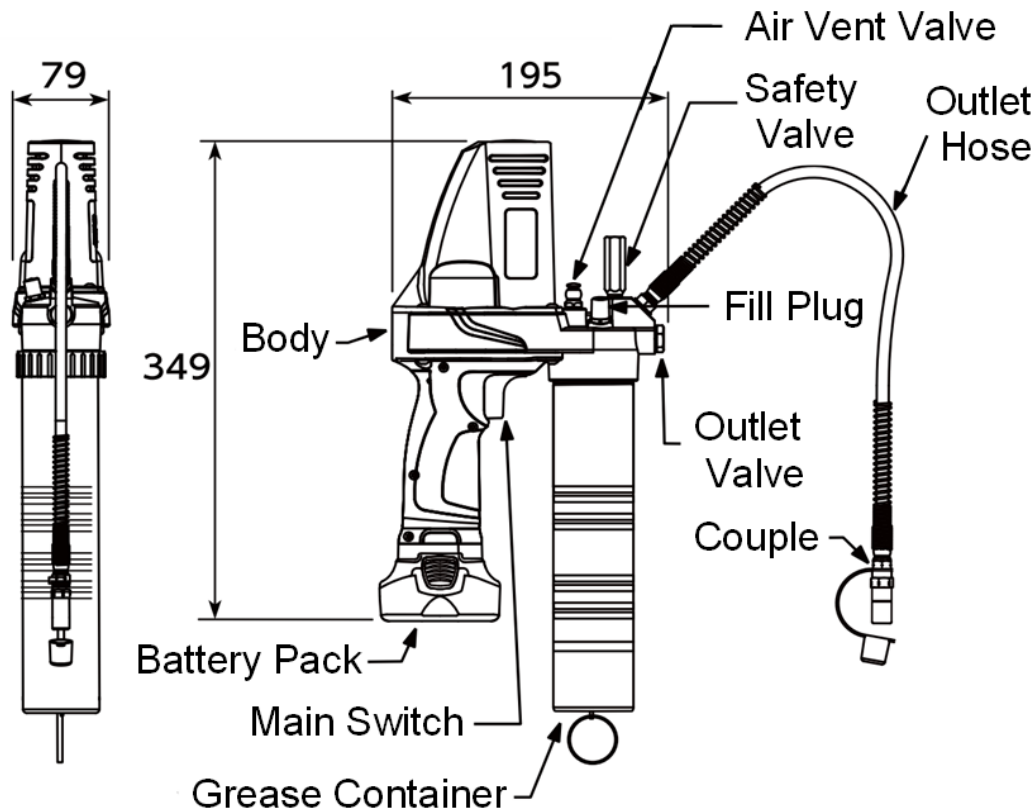


WARNING

1. Do not charge battery pack when temperature is below 10°C (50°F) or above 40 ° C (104°F).
2. Do not attempt to use a set-up transformer, an engine generator or DC power receptacle.
3. Do not allow anything to cover or clog the charger vents.
4. Always cover the battery pack terminals with the battery pack cover when the battery pack is not used.
5. Do not short the battery pack.
6. Do not touch the terminals with any conductive material.
7. Avoid storing battery pack in a container with other metal objects such as nails, coins, etc.
8. Do not expose battery pack to water or rain, A battery pack short can use large current flow, overheating, possible burns and even a breakdown.
9. Do not store the machine and battery pack in locations where the temperature may reach or exceed 50°C (122°F)
10. Do not incinerate the battery pack even if it is severely damaged or completely worn out. The battery pack can explode in a fire.
11. Be careful not drop, shake or strike battery pack.
12. Do not charge inside a box or container of any kind. The battery pack must be placed in a well-ventilated area during charging.
13. For extension of the battery lifetime, the lithium-ion battery is designed with the protection function to stop the output.
In the case of described below, when using this product, even if you are pulling the switch, the motor may stop.
This is not malfunction but the result of protection function.
 - When the battery power remaining runs out, the motor stops.
 - If the tool is overloaded, the motor may stop.
 - In this case, release the switch of tool and eliminate causes of overloading. After that you can use it again.
 - If the battery is overheated under overload work, the battery power may stop. In this case stop using the battery and let the battery cool. After that you can use it again.

Specifications

JTAE911 - Cordless Grease Gun

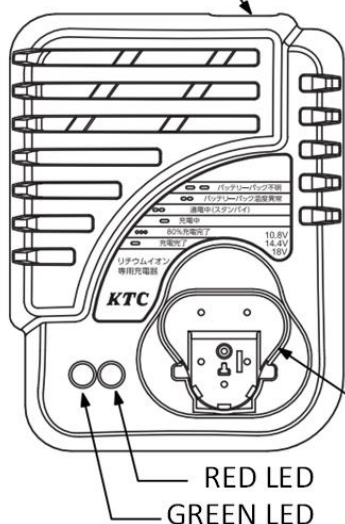


Item Number	JTAE911
Description	CORDLESS GREASE GUN
Voltage	18V D.C.
Delivery	75g / mim
Current	2.0 to 5.5A
Acceptable Grease	Up to NLGI No. 1 to 2
Weight	3.07kg (Battery 0.72kg)

Accessories

JHE180G - Charger

Power Connector



Battery Pack Stand

RED LED
GREEN LED

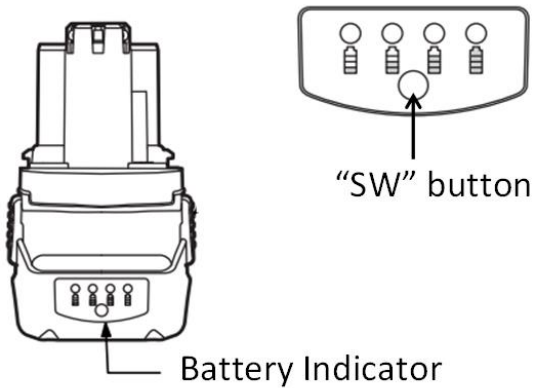
LED		Condition
Green	Red	
—	—	Unknown Battery
	--	Abnormal Battery Temperature
--		Powering up
	—	Charging
.....		80% Charge
—		Full Charge

Slow Flash	--
Quick Flash
Solid	—



1. Charger is plugged into a 100V A.C outlet only.
2. If the battery pack is too hot or too cold, the charger will not fast charge the battery pack and the red Indicator light is “blinking”. When the battery pack temperature returns to between 0°C (32°F) and 50°C (122°F), the charger will automatically begin charging.
3. If both red and green indicator lights are “ON” the battery pack either does not comply or is defective. Please contact your retailer.
4. Do not charge the battery pack in the rain, snow or high temperature environment.
5. Do not charge battery pack when environment temperature is below 0°C (32°F) or above 40°C(104°F).
6. While charge the cool battery pack (below 0°C) in the warm indoor, keep the battery pack in the room for one hour to warm up before starting the battery pack. A cool battery may charge unsaturated.
7. Remove the plug after finishing the charge.
8. Do not use generator for charging the battery pack.

JBE1820G - Battery Pack



- The Battery Pack has a “SW” button and 4-step green LEDs for indicating remaining capacity status.
- The fuel gauge green LED will indicate within 3 seconds when the “SW” button is momentarily pressed.

Remaining Capacity LED Indication	RC Status
LED 1 (green)	0%- 25%
LED 1, 2 (green)	26%-50%
LED 1, 2, 3 (green)	51%-75%
LED 1, 2, 3, 4 (green)	76%-100%

Operating Instructions

Removing or Installing Battery Pack (See Fig.1 Fig.2)

1. Always switch off the machine before insertion or removal of the battery pack.
2. To remove the battery pack, push the button on the battery pack and pull the tool unit from the battery pack in the direction.
3. To insert the battery pack, align the tool unit slides with the battery pack sliding groove and push the tool unit into place.
4. Do not force the battery pack in sliding it into tool unit. If the battery pack does not slide in easily, it is not being inserted correctly.

Charging the Battery Pack (See Fig.3)

1. Plug the fast charger into the power source.
2. Slide the battery pack into the charger as the arrow direction shown on the charger.
3. Push the battery pack into place and make sure the red light on the charger is "ON". The battery pack is now starting the charging cycle.
4. After finish the charging cycle, the light will turn into green. The battery pack is now ready for use.
5. New battery pack is not charged. You need to charge it before use.
6. Always use the specified charger to charge the battery. When the battery pack is inserted into the charger correctly, the red light will come on and charging will begin.
7. When you charge a new battery pack or a battery pack which has not been used for a long period, it may not accept a full charge. This is a normal condition and does not indicate a problem. You can recharge the battery pack fully after discharging it completely a couple of times
8. Unplug the charger from the power source after finish the charge.
9. Remove the battery from the unplugged charger for storage.



Fig.1



Fig.2

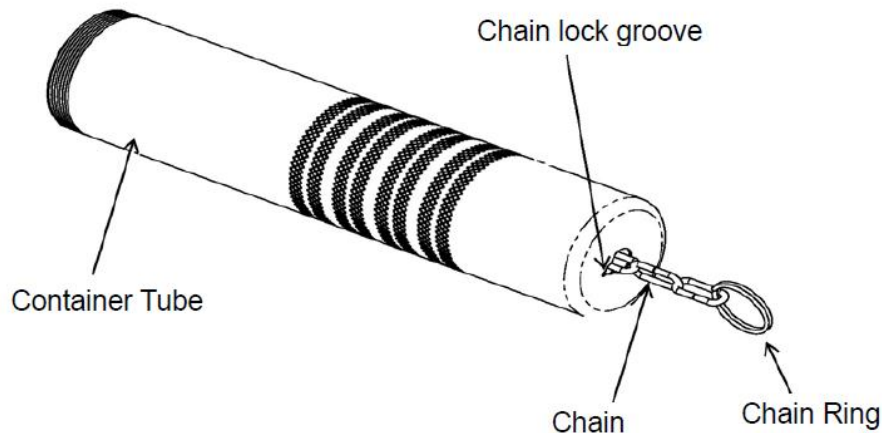


Fig.3

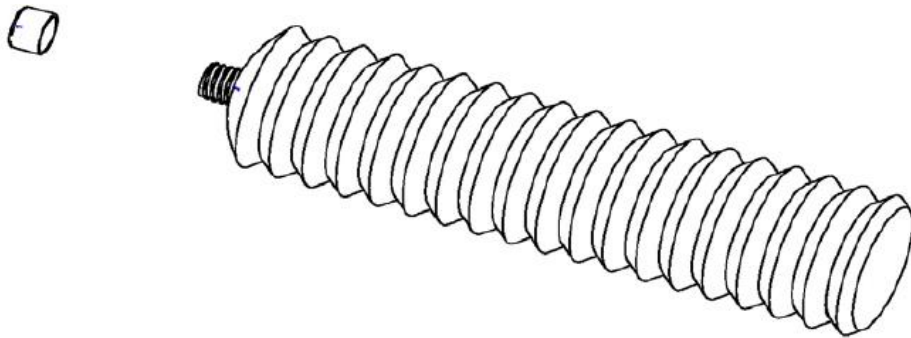
Tool Operating

Cartridge Loading

1. Draw back plunger handle fully until the groove of piston rod is latched into the slot on the tube cap.



2. Do not fill grease from the fill plug.
3. Only use sausage bag grease for applications.



4. Screw grease container assembly into grease gun.
5. Release the piston rod from slot and push it all the way in.
6. This gun is ready to use. If your gun fails to work, it is due to air pocket in the grease container assembly. To remove the air, procedure as following :
Air pockets in the lubricant will cause the gun to lose its output.
Only continue to hold trigger switch meanwhile press/release air vent valve until trapped air is removed.

Important : Do not continue to hold down trigger if grease gun is stalled.
This could damage the motor or cause fire.

Note: Noise test results:

Pressure Safety Valve

Cartridge Loading

This valve is set to 6250 p.s.i. pressure by factory. It will bypass grease output when blocked lubricant line or clogged bearing is occurred. It indicates to repair or to clean before use.

Important : Do not try to adjust this valve. It may result in a risk of injury.

Troubleshooting

Symptom	Possible	Corrective Action
Battery pack does not appear to accept charge when the battery pack is plugged into charger.	Charger or battery pack terminals may be corroded or remained dirty.	Clean the terminals with a fine emery cloth.
	Battery pack damaged or cycle life exhausted.	Replace battery pack.
	Damaged charger (It gets hot make exclusively loud noise, or smoke during charge .)	Unplug from power source immediately. Replace charger.
Motor does not run.	Battery pack is not charged.	Charge battery pack.
	Battery pack terminals may be dirty or corroded.	Clean the terminals with a fine emery cloth.
	Motor may be bad.	Replace motor.
Grease output bypass from pressure safety valve.	Clogged bearing, block lubricant line.	Repair or clean before use.
	Pressure safety valve may be remained dirty.	Replace pressure safety valve.
Gun does not delivery grease.	Air pocket exists in the grease container ass'y.	See procedure 「 Remove Air Pocket 」 .
	The plunger may be blinded.	Replace grease container ass'y.
	Outlet valve may be remained dirty.	Unscrew and clean ball seat area.